



MAX HIGHWAY  
**COMPANY  
PROFILE**



ISO 9001:2015 Certified Company  
Certificate No : QAIS-Q-MYA-MH-01.25.018



# TABLES OF CONTENTS

Greetings from Management ..... 04

Discover Max Highway ..... 06

Our Guiding Principles ..... 09

Leadership & strength ..... 12

Network & Footprint ..... 14

Our Assets ..... 29

Making a Difference ..... 30

# GREETINGS FROM MANAGEMENT



**M**ingalarbar.  
We are very pleased to share our corporate profile with you.

Max Highway Co., Ltd. is a subsidiary of the Max Myanmar Group. The company was established in 2008 and has been working continuously to provide the best service to road users on BOT roads. Max Highway keeps safety as a top priority and aims to improve the highways to international standards.

**Our vision is to uphold and manage high-standard road structures that are essential for Myanmar's road and transport development.** We aim to provide travelers with safe and secure road transportation services by integrating modern road engineering techniques and more systematic road management.

Since the establishment of the company, Max Highway has played a pivotal role in ushering Myanmar into an era of increased commerce development and knowledge exchange. We've been in charge of the main Yangon-Bago Road which is now running operations like toll fee collection, road expansion, and upgrading the roads with advanced technologies for the Yangon-Bago Road and Yangon-Pyay-Magway Union Highway which is a total of 435 miles. With an open and transparent tendering system, the company's large-scale preparation works are also carried out as needed.

**As a responsible company, we also organize** local social development programs for communities such as providing socio-economic benefits in the business locations, the development of the education sector, and also creating job opportunities for locals. We are always striving to support sustainable development and working hard to ensure the safety and convenience of all travelers, and will continue to maintain the Yangon-Bago highway and Yangon-Pyay-Magway Highway up to international standards. We look forward to partnering with you to boost the land transportation systems of Myanmar.

Thank you.

*Chairman*

*Max Highway Co.Ltd*

# COMPANY EXECUTIVE PROFILE



## U Sun Lin Wynn

*Chief Executive Officer*

U Sun Lin Wynn leads Max Highway Co., Ltd. with a focus on operational excellence, infrastructure development, and adherence to ISO 9001:2015 standards. With nearly 20 years of experience at Max Myanmar Group, he brings deep expertise in toll operations, road construction, and strategic management. His leadership fosters innovation, operational efficiency, and a commitment to safety, driving the company's continued growth and reinforcing its position as an industry leader.

## U Khin Maung Kywe

*Managing Director*

Bringing Over 25 years of experience to Max Myanmar Group, U Khin Maung Kywe leads the Highway Unit with hands-on engineering know-how and strategic vision. He drives the successful delivery of major road projects, ensuring high standards in quality, safety, and performance—fueling both company growth and national progress.



## U Htay Naing Win

*Director (Corporate)*

As Director (Corporate), U Htay Naing Win brings over 26 years of experience within Max Myanmar Group to his role at Max Highway. He leads Admin, HR, and Business Support with a focus on strengthening corporate structure, optimizing operations, and cultivating a high-performance culture that supports the company's long-term goals.

## Daw Htay Htay Linn

*Chief Financial Officer*

As CFO of Max Highway, Daw Htay Htay Linn brings over 12 years of experience within the group to her leadership in finance, budgeting, and strategic planning. Her expertise in corporate governance and risk management supports the company's financial strength, ensuring alignment with long-term goals and industry standards.



## U Myo Khaing

*Chief Engineer*

With 5 years at Max Highway, and 18 years of prior international experience U Myo Khaing leads the planning, design, and execution of highway projects with precision and expertise. His civil engineering background ensures that every project meets the highest standards for quality, safety, and environmental impact, reinforcing Max Highway's position at the forefront of infrastructure development.

## U Moe Thu Zaw

*Senior General Manager*

U Moe Thu Zaw brings 18 years experience to his role as Senior General Manager of the Toll Unit. He drives operational efficiency and customer satisfaction in toll management, ensuring smooth traffic flow, effective toll collection, and enhanced revenue generation. His leadership strengthens the Toll Unit's role in Max Highway's overall success.



# DISCOVER MAX HIGHWAY



## ABOUT US:

Max Highway Co. Ltd., a subsidiary of the Max Myanmar Group, was founded in 2008 with a primary mission: to design, build, operate, and maintain our nation's vital National Highways. Our journey begins with Concession Agreements that enable us to develop safe and easy transportation routes.

At Max Highway, we are not just road builders; we are nation builders. Our role extends beyond the asphalt and concrete to ensure the connectivity and functionality of Myanmar's National Highways. We also provide technical and financial support to government organisations for the development of state highways and regional roadways with unmatched precision and professionalism.

One of our core functions is the establishment of national standards for roads and bridges, setting the bar for quality and safety in infrastructure development. We serve as a knowledge hub, sharing technical expertise and insights on roads and bridges.

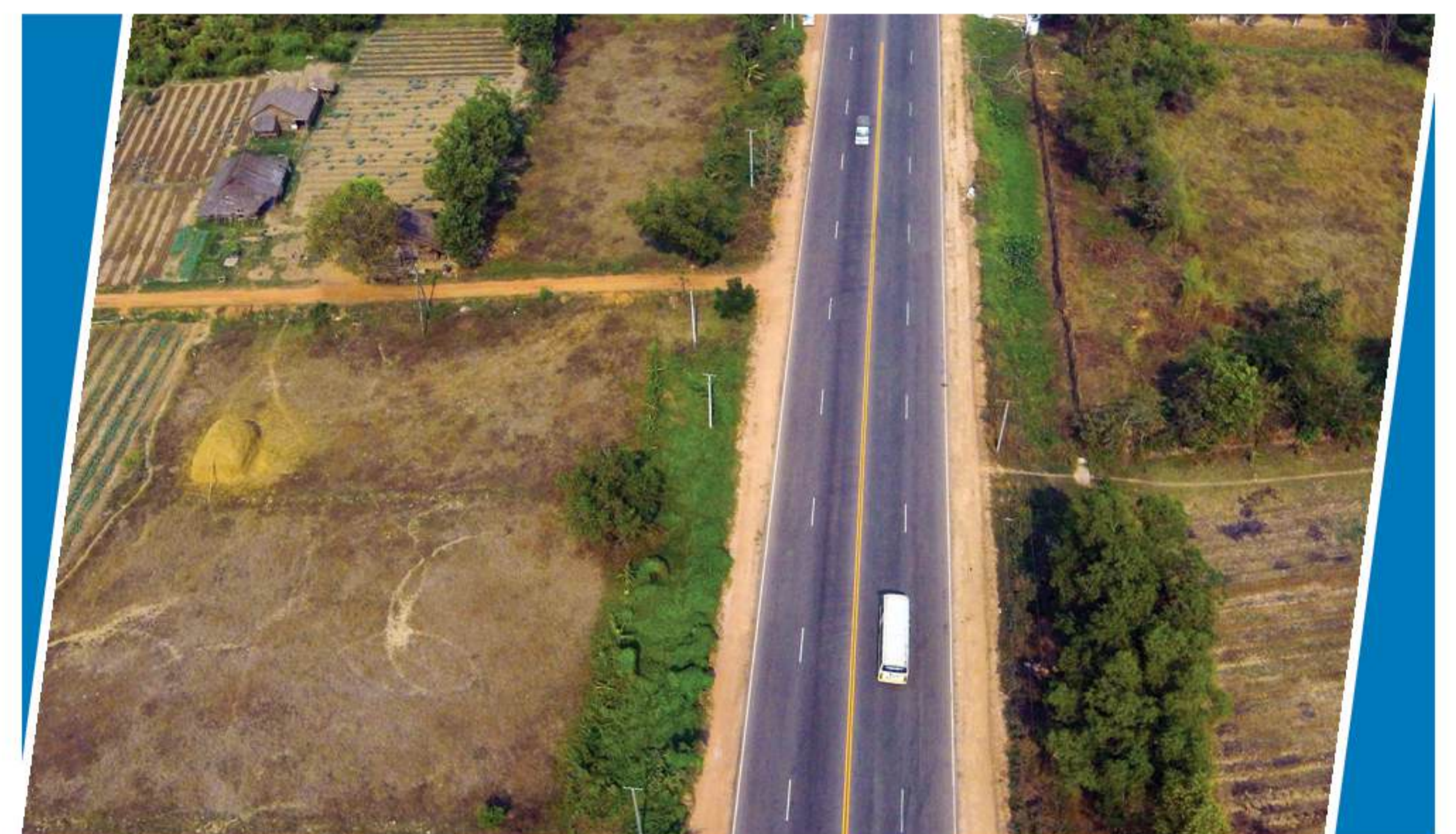
Max Highway Co. Ltd. is dedicated to shaping policies related to Road Transport, National Highways, and Transport Research. We collaborate closely with the Ministry of Construction, relevant government departments, and individuals to enhance the mobility and efficiency of the nation's road transport system, facilitating progress, and prosperity for all of Myanmar

## HISTORY:

Max Highway Co. Ltd., has played a pivotal role in ushering Myanmar into an era of increased commerce, development, and knowledge exchange. Our efforts have been focused on the creation of an expansive and efficient road network, knitting together rural and urban areas, as well as connecting small towns to bustling cities.

The development of an international highway network is a formidable undertaking, characterised by its inherent challenges. This endeavor entails constructing roads that adhere to universal standards, despite the vast diversity of landscapes encountered, from towering mountains to arid deserts, river crossings, and dense forests.

Observing global trends, it's apparent that the majority of developed nations now embrace toll roads as a fundamental part of their infrastructure. Notably, these toll roads are not isolated but rather form interconnected networks of highways. This shift is a testament to the positive outcomes and enhanced travel experiences that toll road systems bring. The valuable lessons learned from the successful implementation of toll road systems are becoming increasingly widespread and adopted worldwide.



## 2008

Establishment of Max Highway Start of Yangon-Bago highway segment (32/6) project

## 2010

Start of Dagon-Thilawa Road (13/5) mile project, and Thanlyin-Kyauktan Road segment (8/2) mile project

## 2015

Upgrade of No.3 Main Road, doubling its width from 24 feet to a four-laned 48 feet- wide road. The project began in 2014, and successfully completed in 2015.

## 2018

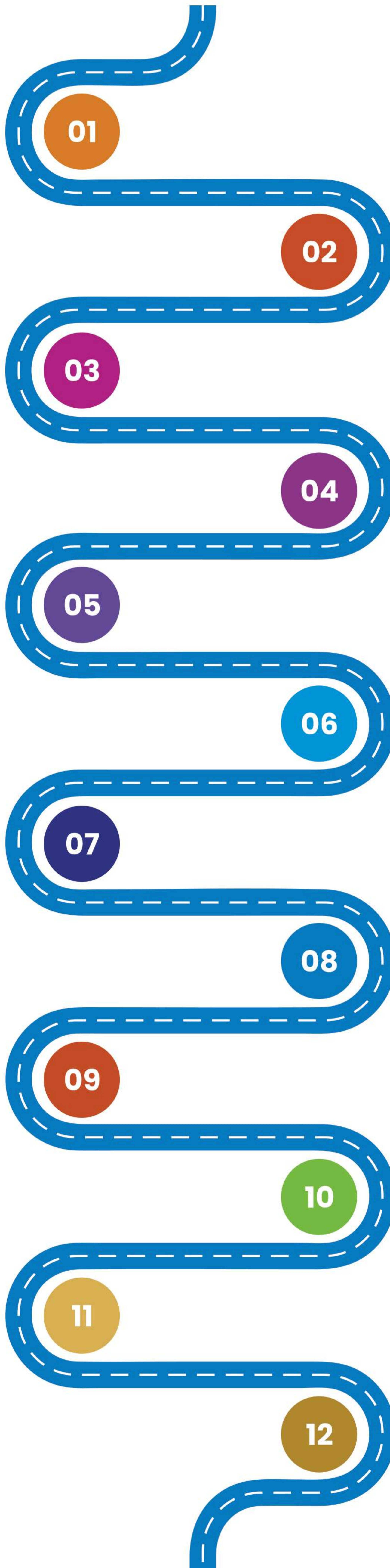
Thanlyin (Payer, Kone) - Kyauktan Road, 6/4 miles from 0/0 to 6/4, 26 feet wide and From 6/4 to 8/2, 1/6 mile was upgraded to 30 feet wide. Pyay-Aung Lan-Magwe road was upgraded from 1/5 mile to a 4-lane asphalt concrete road with a width of 46 feet.

## 2020

- The 18/5 mile section of Yangon-Pyay road, Taikkyi - Thayarwaddy, was upgraded to a 4-lane concrete road with a width of 48 feet. Moreover, 7/6 miles were upgraded to 48 feet wide 4 lanes and 3/0 miles were upgraded to 24 feet wide 2 lanes asphalt concrete roads.
- The 37/0 mile section of Thayarwaddy-Pyay road was upgraded to a 2-lane asphalt concrete road with a width of 24 feet.

## 2023

- 17/5 miles of Yangon-Pyay Road, Taikkyi - Thayarwaddy section was upgraded to a 48-foot wide 4-lane concrete road
- 10/1 mile of Dagon-Thilawa Road was upgraded to a 48-foot wide 4-lane concrete road.
- 23/0 mile of (No,2) road was upgraded to a 4-lane concrete road with a width of 48 feet.
- 14/6 mile section of Thayarwaddy-Pyay road was upgraded to a 24-foot wide 2-lane bituminous road.
- Pyay-Aunglan-Magway section 47/5 miles was upgraded to a 24-foot wide 2-lane bituminous road.



## 2009

Start of No.2 Main Road (23/0) mileproject, and No.3 Main Road (9/2) mile project

## 2011

Start of No.4 Main Road (6/4) mile project, and Yangon-Pyay-Magway Highway (307/4) mile project

## 2017

27/7 miles of Yangon-Bago road from 0/0 to 27/7 and Bago city road was upgraded to a 72 feet wide, asphalt concrete road.

## 2019

- 5/6 mile of Yangon - Bago Road from 27/7 to 33/5 was upgraded to a 24 feet wide asphalt concrete road.
- Yangon-Pyay Road, Htauk Kyant-Hmaw-bi-Taikkyi road, 23/1 mile was upgraded to a 48 foot wide 4 lane asphalt concrete road.
- 97/2 mile, section of Thayrawati-Pyay road was upgraded to 24-foot wide 2-lane concrete road.

## 2021

- 6/4 mile of (No,4)road was upgraded and extended into a 4-lane concrete road with a width of 48 feet.
- 4/2 mile section of Pyay-Aunglan-Magway Road was upgraded to a 48-foot-wide 4-lane bituminous road.

## 2024

- The (8/0) mile Pyay-Aung Lan-Magway section was upgraded to a 24-foot wide (2) lane bituminous road.
- Yangon-Bago Road (4/3) miles wide asphalt concrete road upgraded.
- The (2/2) mile of Road No-(3) was widened to 74 feet wide, (6) lanes, and concrete pavement.
- The (4/4) mile of No-(2) Road was upgraded to a 24-foot wide, (2) lane, asphalt concrete road.

# OUR GUIDING PRINCIPLES



## WE ARE A PURPOSE-DRIVEN COMPANY

Our mission is to establish a robust and reliable transportation system that links communities, fosters economic prosperity, and promotes cooperation among leaders, businesses, and everyday residents. , and License Plate Recognition (LPR).

### VISION:

To construct, uphold, and manage high-standard road infrastructure that is essential for Myanmar's advancement and development."

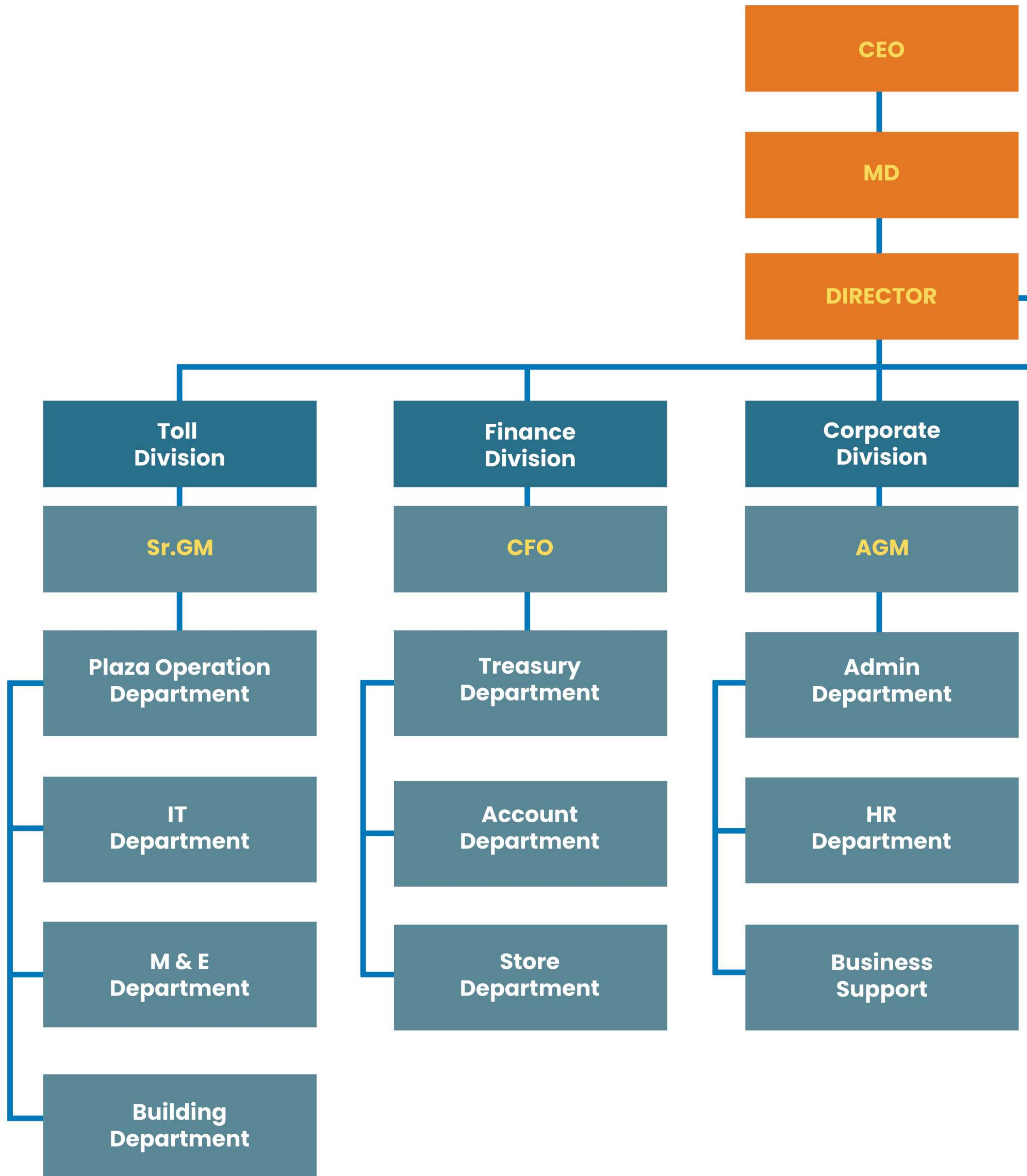
### MISSION:

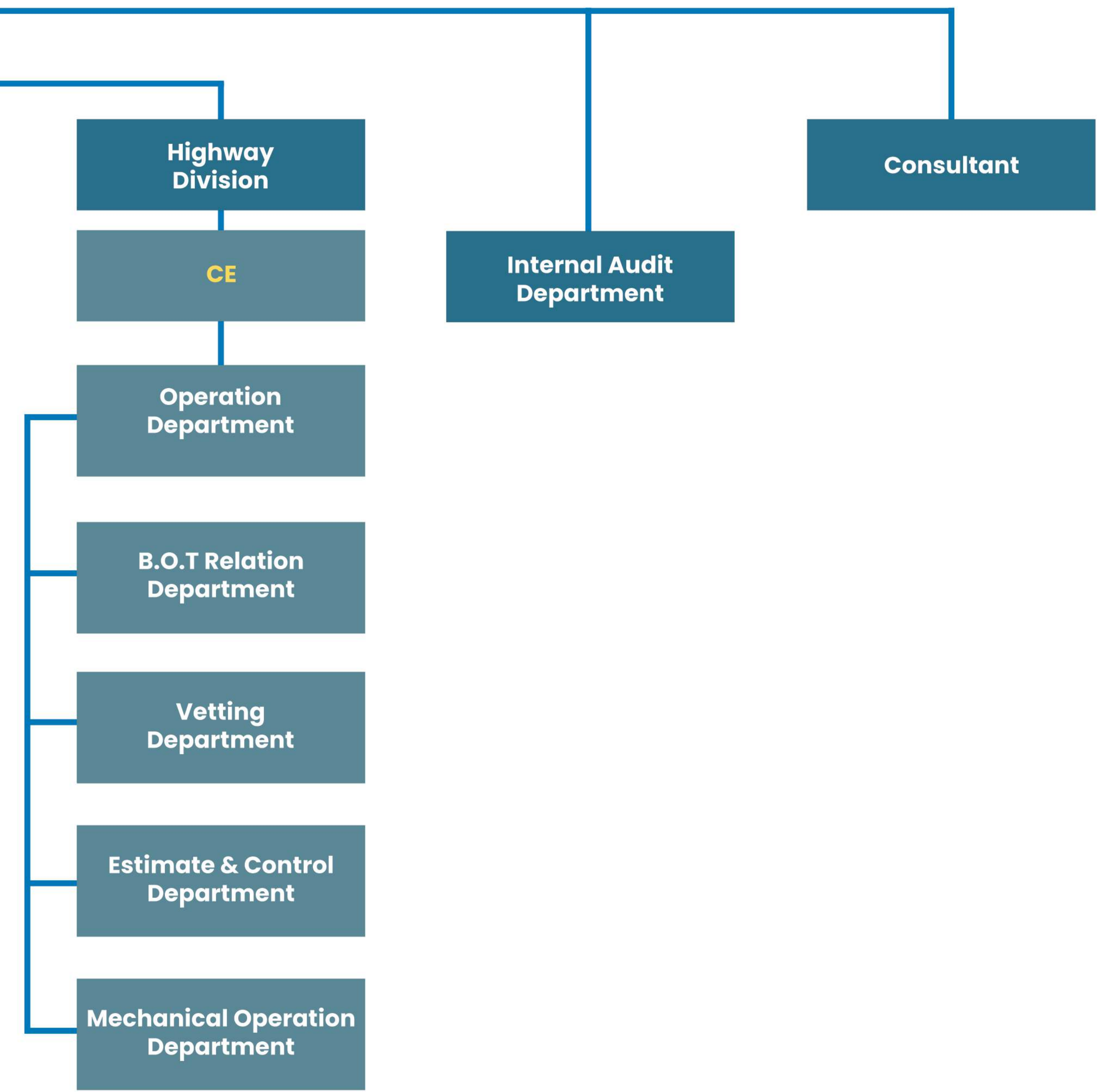
To optimise our resources with utmost efficiency and effectiveness in order to deliver services that enhance the safety and convenience of transportation routes.

### OBJECTIVE:

- **Enhancing transportation connectivity:** To execute the construction, upgrading, and maintenance of roads and bridges while collecting toll fees in accordance with guidelines set by relevant government and administrative bodies.
- **Creating job opportunities:** To foster employment opportunities for the local population and provide them with essential skills, training, and experience in the industry.
- **Promoting economic growth:** To contribute to the nation's socio-economic development through the effective management of road infrastructure; facilitating efficient movement of goods, services, and people across the country.
- **Ensuring quality and durability:** Strives to deliver high-quality infrastructure that meets international standards, ensuring durability and longevity. Involves using quality materials and products, efficient and effective construction techniques, and scheduling regular maintenance and repairs.
- **Embracing innovation & technology:** - In the process of implementing digital payment systems, Touch n' Go functionality and RFID-based system capability, and License Plate Recognition (LPR).

## ORGANISATIONAL CHART





# LEADERSHIP & STRENGTH

## A Diverse and Inclusive Workforce: Breaking barriers in a male dominant industry

Our journey towards leadership begins with the cultivation of a diverse and inclusive workforce. We firmly believe that diversity fuels innovation and brings unique perspectives to the table. As a testament to our dedication, 29% of Max Highway's staff are women, reflecting the inclusivity we stand for. Beyond Max Highway, our parent organization, Max Myanmar Group, boasts an impressive 37% of female employees.

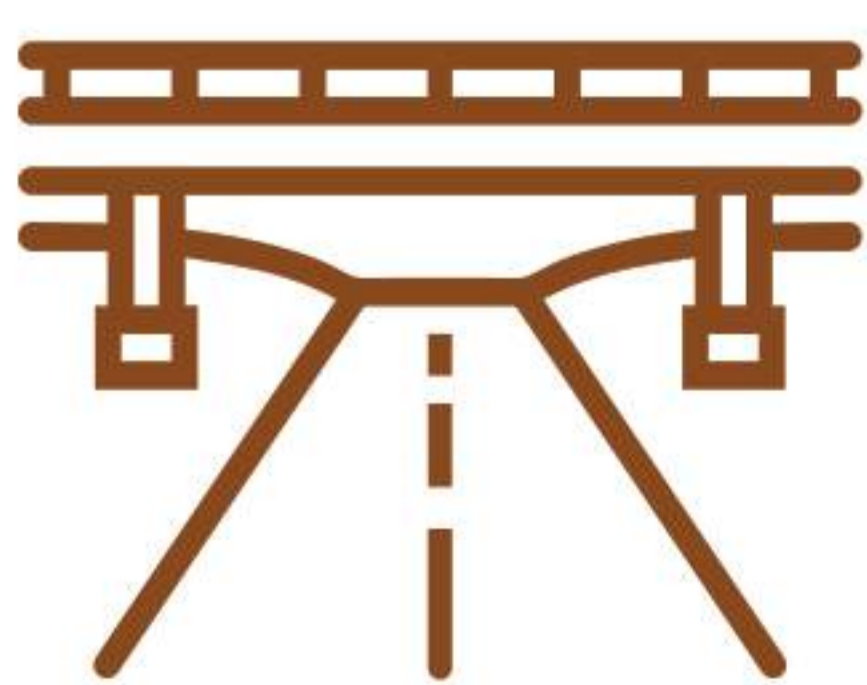
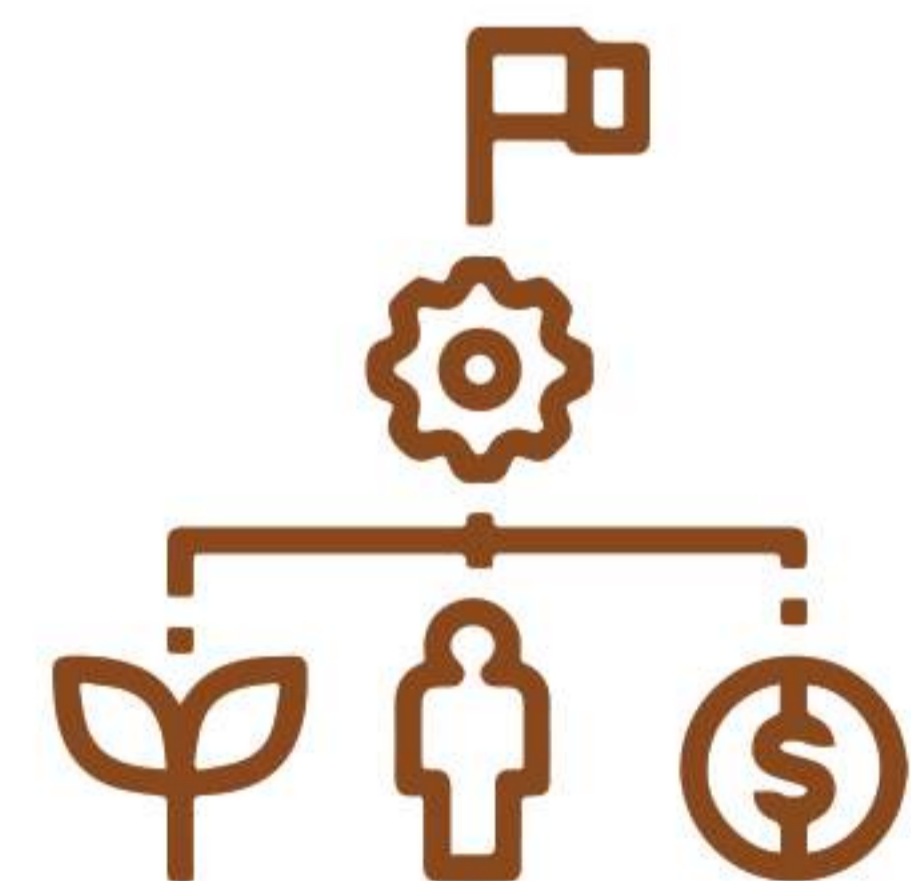


## Empowering with Opportunities

Leadership is also about empowerment. We strive to empower our employees, regardless of their background, to reach their fullest potential. Through mentorship programs, skill development initiatives, and a culture of respect, we foster an environment where every voice is valued.

## Extensive Resources for DEI

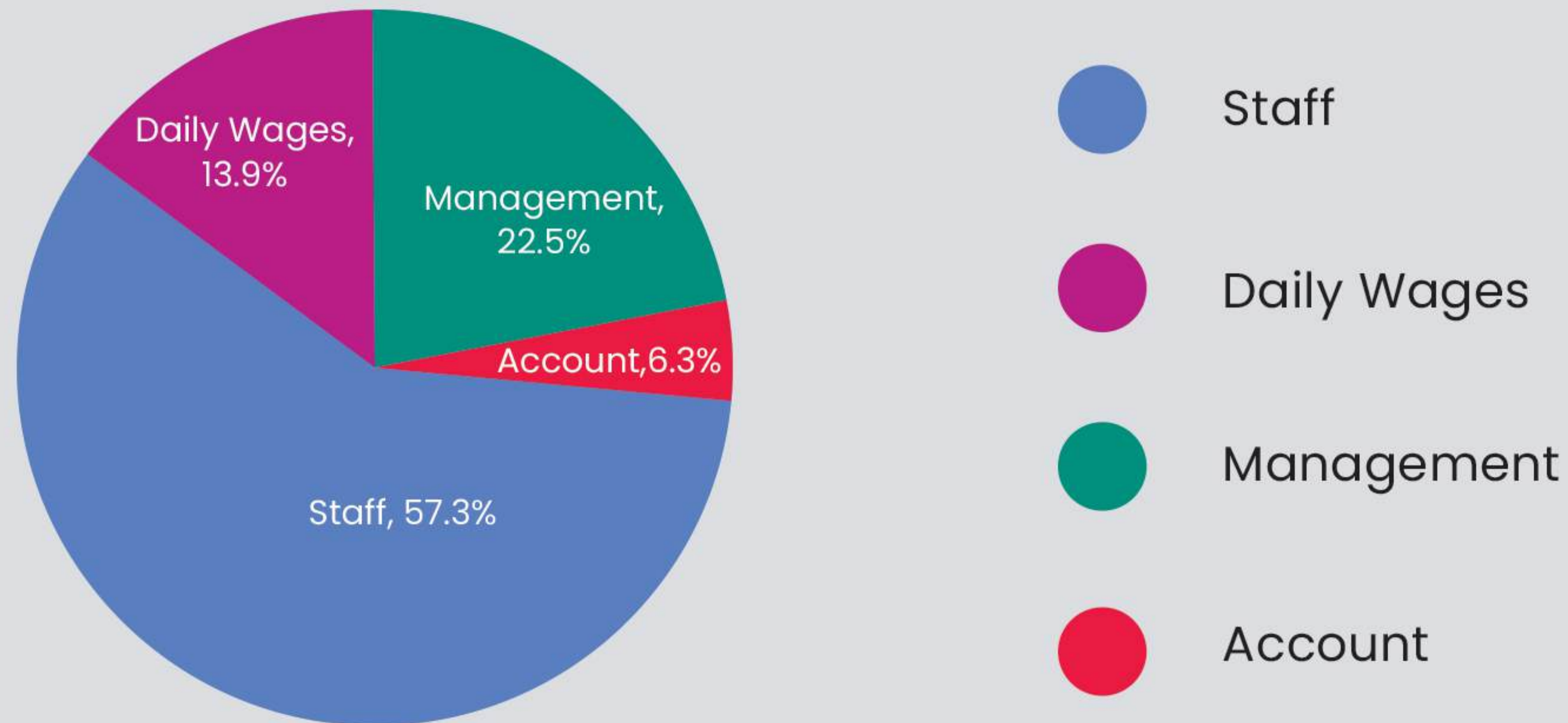
Our commitment to DEI is not just a statement; it's a way of life at Max Highway. We invest in extensive resources and programs to promote diversity and inclusion at every level of our organization. From education and awareness campaigns to providing equal opportunities for all, we are building a stronger, more equitable future.



## Building Roads, Bridging Differences

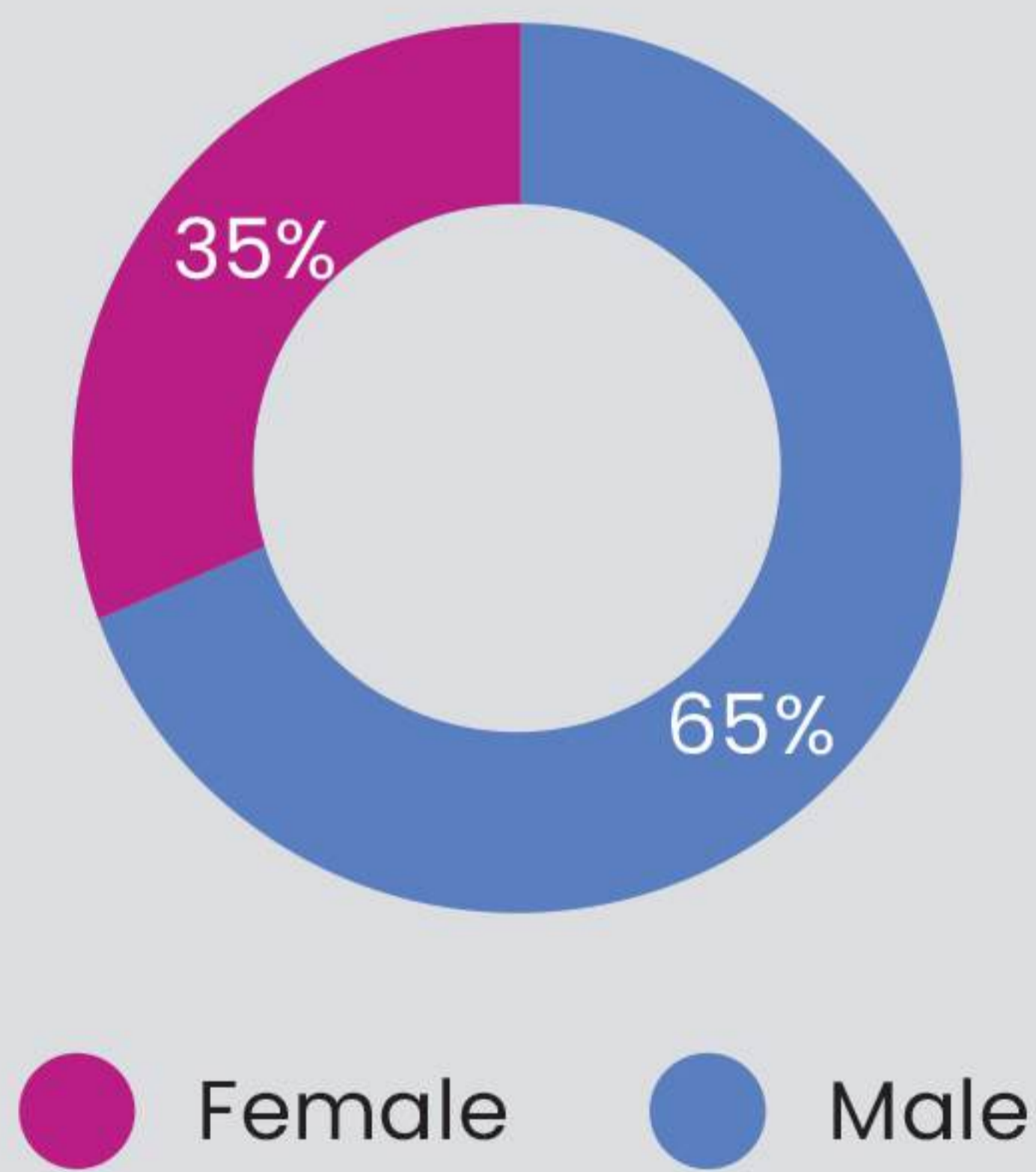
Max Highway recognises that roads and bridges not only connect geographical locations but also bridge the gaps in society. We are proud to lead the way in promoting inclusivity, equality, and diversity in the infrastructure sector. In every mile we build, in every project we undertake, and in every team member we empower, we are shaping a future where diversity, equity, and inclusion are the cornerstones of leadership. This is Max Highway, where roads lead to progress, and diversity leads to strength.

# ORGANISATIONAL STRENGTH

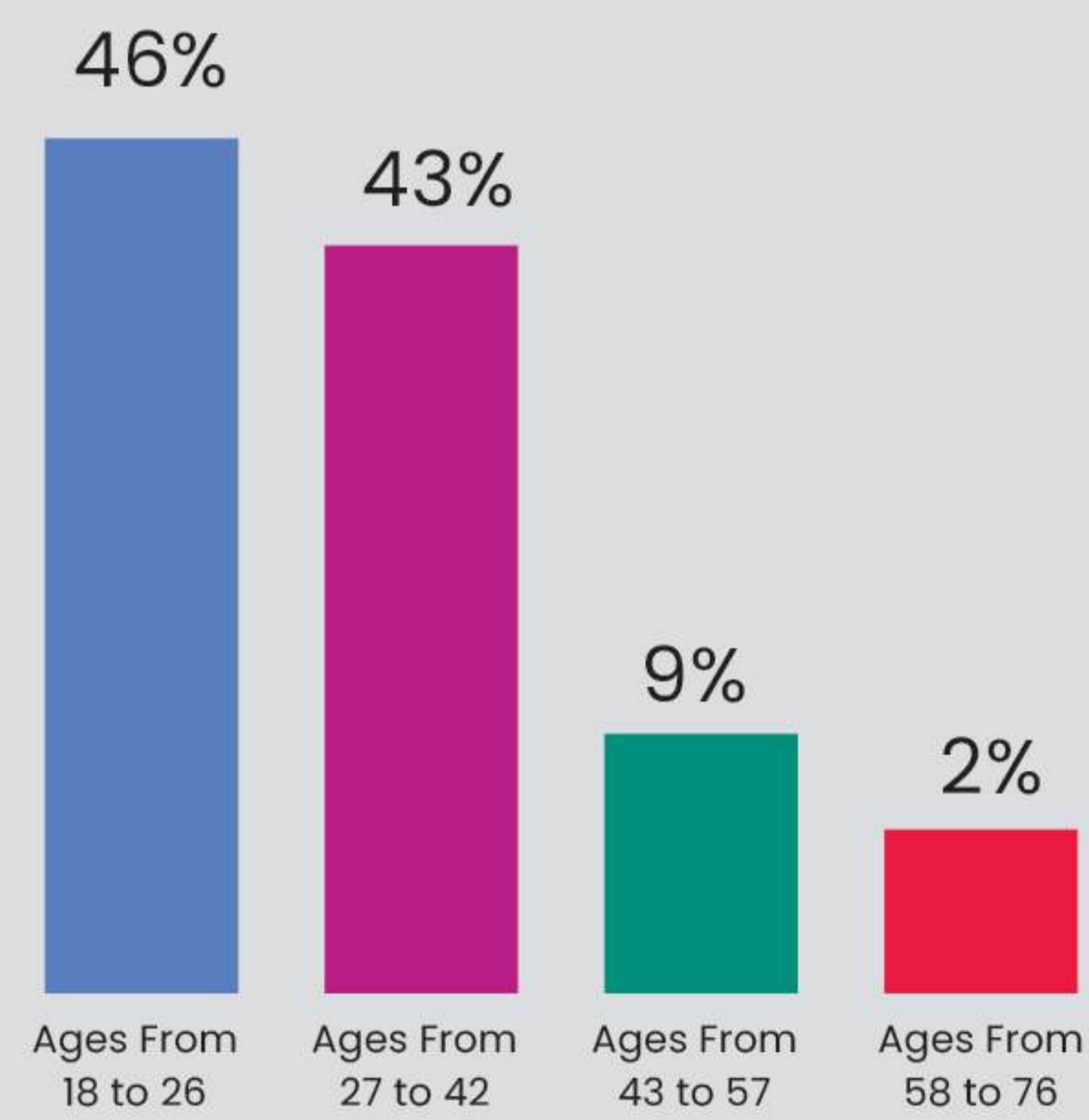


## GENDER

Max Highway Co.,Ltd.



## AGE



NO	Employee's Age Period	Percentage
1	Generation Z (Born After 1996) Age From 18 to 26	46%
2	Generation Y (1980-1995) Age From 27 to 42	43%
3	Generation X (1965-1979) Age From 43 to 57	9%
4	Baby Boomer (1946-1964) Age From 58 to 76	2%
<b>Total</b>		<b>100%</b>

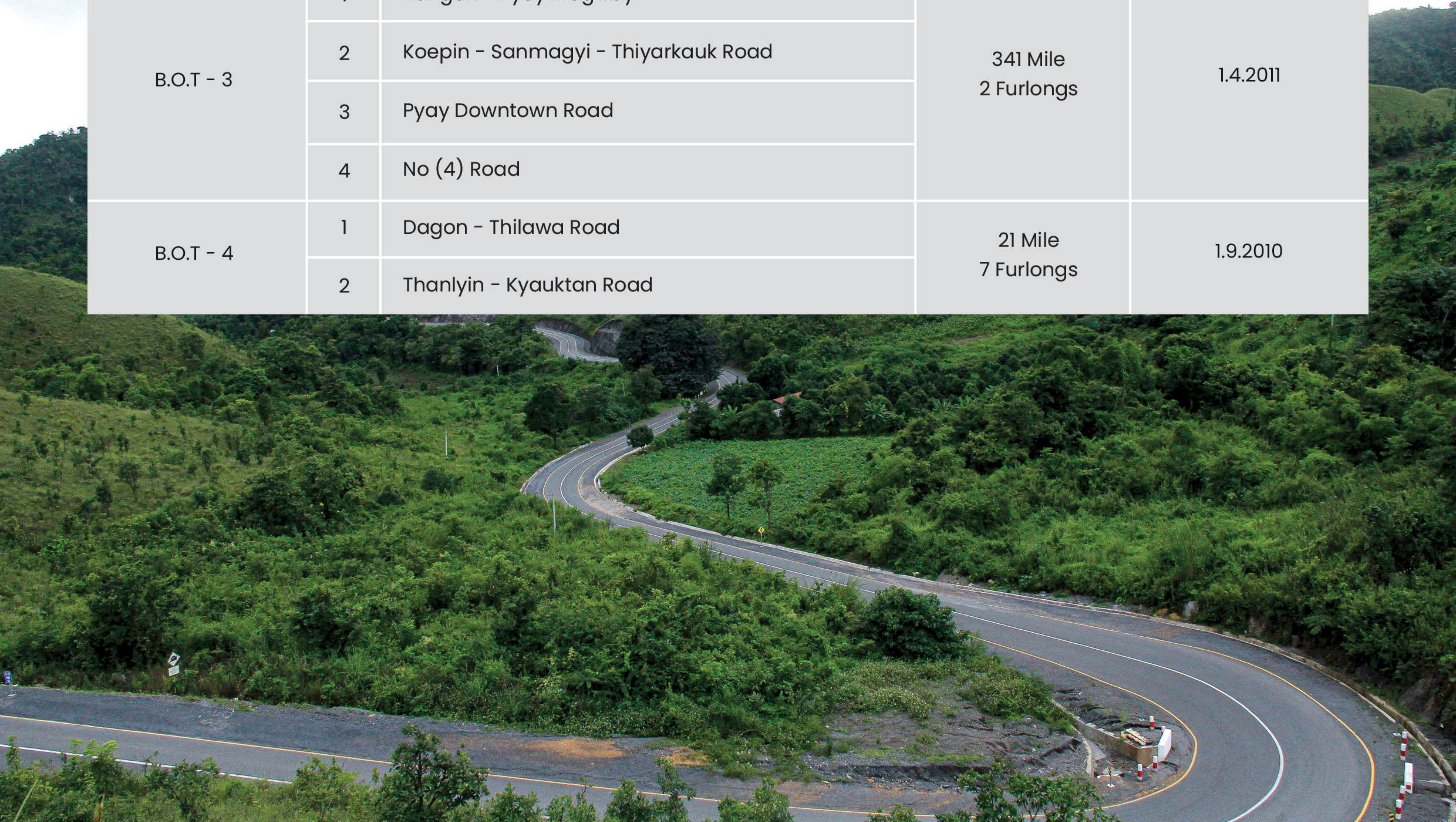
Toll Collection Manpower	702
Toll Collection Daily Wages	30
Highway Unit Manpower	201
Highway Daily Wages	116
<b>Total</b>	<b>1049</b>

# NETWORK & FOOTPRINT

Max Highway's commitment to road construction goes beyond bricks and asphalt. We're elevating roads, expanding their reach, and connecting communities across Myanmar. Our wider and more efficient road network links rural and urban areas, fostering commerce, development, and the exchange of knowledge. Through the B.O.T system, we efficiently collect toll gate fees for the Ministry of Construction. Notable networks like Yangon-Bago and Yangon-Pyay-Magway are lifelines connecting the mid-west delta regions.

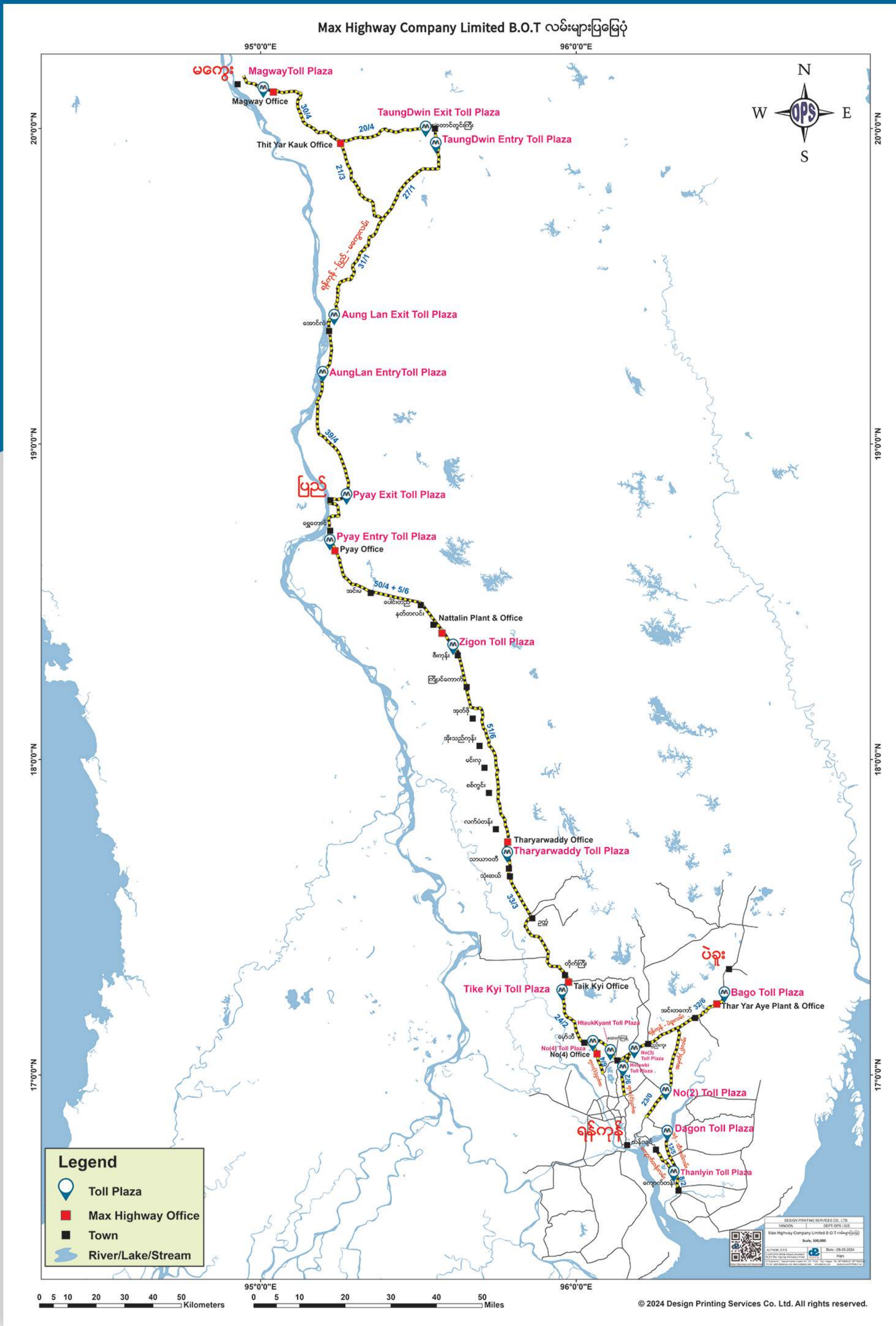
Max Highway isn't just about roads; we're about creating opportunities. We're proud to support job creation for local residents, contributing to the nation's socio-economic growth. We are also working on paving the way for a cashless payment system, ensuring smoother traffic flow and convenience for everyone.

B.O.T. Contract	No.	Road Name	Road Length	Operation Date
B.O.T - 1	1	Htauk Kyant - Bago Road	38 Mile 4 Furlongs	1.4.2008
	2	Bago Downtown Road		
B.O.T - 2	1	No (2) Road	34 Mile 1 Furlongs	1.4.2009
	2	No (3) Road		
	3	Htauk Kyant By Pass Road		
B.O.T - 3	1	Yangon - Pyay Magway	341 Mile 2 Furlongs	1.4.2011
	2	Koepin - Sanmagyi - Thiyarkauk Road		
	3	Pyay Downtown Road		
	4	No (4) Road		
B.O.T - 4	1	Dagon - Thilawa Road	21 Mile 7 Furlongs	1.9.2010
	2	Thanlyin - Kyauktan Road		



# HIGHWAY NETWORK BY REGIONS

Details Data of B.O.T Roads



No.	Road Name	Road Length
1.	Yangon-Pyay-Magway Raod	307 Miles 3 Furlongs
2.	Koepin - Sanmagyi - Thityarkauk Road	19 Miles 3 Furlongs
3.	Sinpoutwel - Tawnyanungpinthar Road	2 Miles
4.	Pyay Dawntown Road	6 Miles
5.	Yangon - Bago Road	33 Miles, 5 Furlongs
6.	Bago Dawntown	4 Miles, 7 Furlongs

No.	Road Name	Road Length
7.	No-2 Road	23 Miles
8.	No 3 - Road	9 Miles, 2 Furlongs
9.	No 4 - Road	6 Miles, 4 Furlongs
10.	Dagon - Thilawa Road	13 Miles, 5 Furlongs
11.	Thanlyin -Kyauktan Road	8 Miles 2 Furlongs
12.	Htauk Kyant By Pass Road	1 Miles 7 Furlongs
<b>Total</b>		<b>435 Miles 6 Furlongs</b>

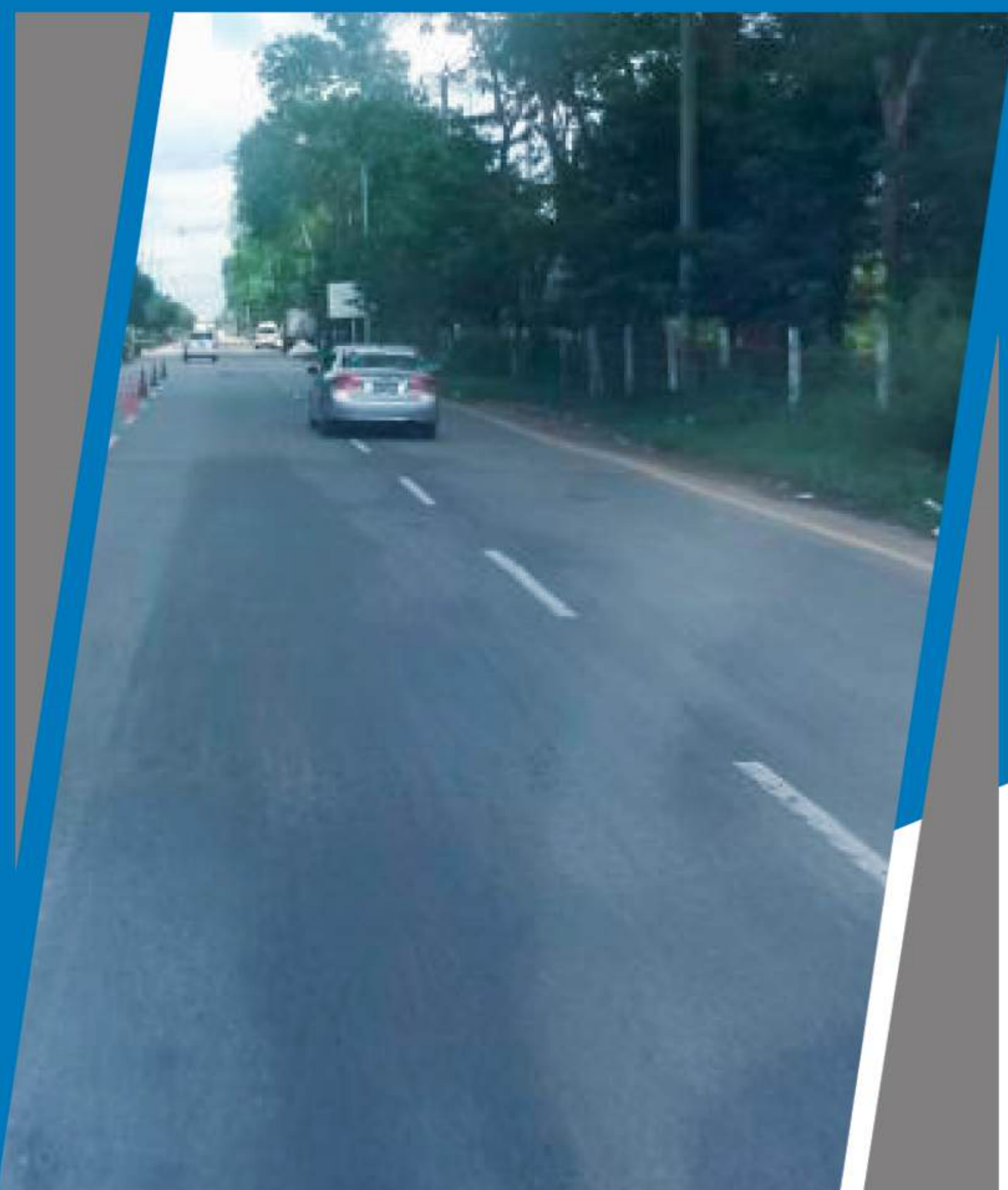
## YANGON – BAGO ROAD



### Yangon – Bago Road

No.	Name	Road Information
1	Road Length	33 mile - 5 furlong
2	Type of Road (Origin)	Bituminous road
3	Road Width (Origin)	0/0 - 27/7 = 27/7 mile ( 72 feet width , 6 lane , Bituminous Road ) 27/7 - 33/5 = 5/6 mile ( 24 feet width , 2 Lane , Bituminous Road )
4	Current Road Condition	0/0 - 27/7 = 27/7 mile ( 72 feet width , 6 lane , Asphalt Concrete Road ) 27/7 - 33/5 = 5/6 mile ( 24 feet width , 2 Lane , Asphalt Concrete Road )
5	Type of Ongoing Projects	- Regular Maintenance Works Upgrading Work - Surface Improvement with Asphalt Concrete
6	Starting Operation Date	1.4.2008

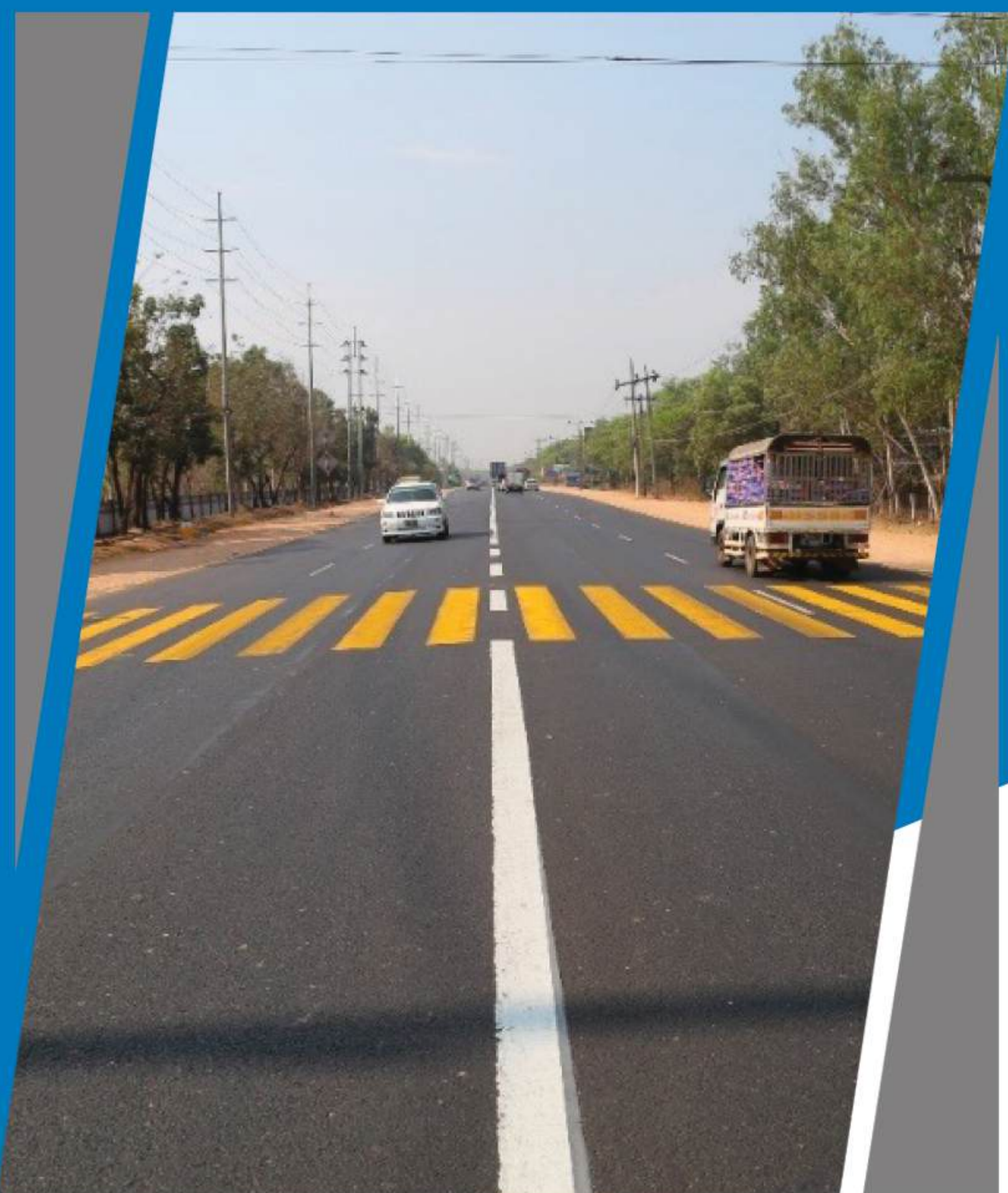
# BAGO DOWNTOWN



## Bago Downtown

No.	Name	Road Information
1	Road Length	4 mile - 7 furlong
2	Type of Road (Origin)	Bituminous
3	Road Width (Origin)	0/0 - 4/7 = 4/7 mile ( 72 feet width , 6 lane , Bituminous Road )
4	Current Road Condition	0/0 - 4/7 = 4/7 mile ( 72 feet width , 6 lane , Asphalt Concrete Road )
5	Type of Ongoing Projects	<ul style="list-style-type: none"> <li>- Regular Maintenance Works</li> <li>Upgrading Work</li> <li>- Surface Improvement with Asphalt Concrete</li> </ul>
6	Starting Operation Date	1.4.2008

## NO-2 ROAD



### No-2 Road

No.	Name	Road Information
1	Road Length	23 mile - 0 furlong
2	Type of Road (Origin)	Bituminous
3	Road Width (Origin)	22 feet width , Bituminous
4	Current Road Condition	8/0 - 10/4 = 2/4 mile ( 48 feet width , 4 lane , Asphalt Concrete Road ) 10/4 - 16/0 = 5/4 mile ( 48 feet width , 4 lane , Asphalt Concrete + Concrete Road ) 16/0 - 31/0 = 15/0 mile ( 48 feet width , 4 lane , Bituminous + Concrete Road )
5	Type of Ongoing Projects	- Regular Maintenance Works Upgrading Work - 6 Lane (74 feet width) Concrete Extension Work , Earth Work - Regulation and Overly with Chipping Work
6	Starting Operation Date	1.4.2009

## NO-3 ROAD



### No-3 Road

No.	Name	Road Information
1	Road Length	9 mile - 2 furlong
2	Type of Road (Origin)	Bituminous
3	Road Width (Origin)	24 feet width , Bituminous
4	Current Road Condition	0/0-3/3 = 3/3 mile (48 feet width, Asphalt Concrete Road) 3/3-9/2 = 5/7 mile (74 feet width, Asphalt Concrete + Concrete Road)
5	Type of Ongoing Projects	- Regular Maintenance Works Upgrading Work - 6 Lane (74 feet width) Concrete Extension Work , Earth Work - Regulation and Overly with Chipping Work
6	Starting Operation Date	1.4.2009

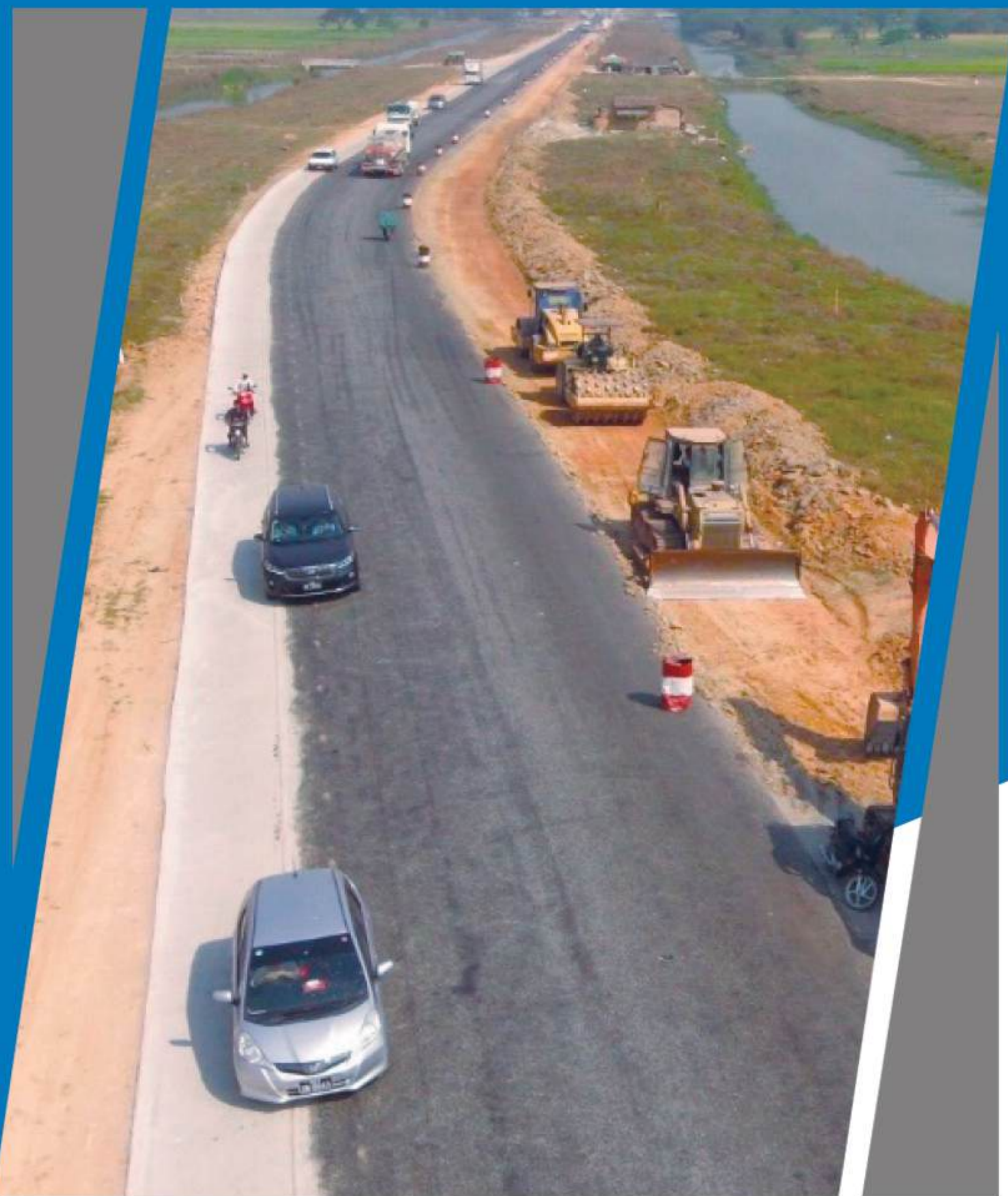
## NO-4 ROAD



### No-4 Road

No.	Name	Road Information
1	Road Length	6 mile - 4 furlong
2	Type of Road (Origin)	Bituminous
3	Road Width (Origin)	24 feet width , Bituminous
4	Current Road Condition	48 feet width , Bituminous + Concrete Road
5	Type of Ongoing Projects	- Regular Maintenance Works Upgrading Work - Regulation with Pen.Mac.
6	Starting Operation Date	1.4.2011

## DAGON – THILAWA ROAD



### Dagon – Thilawa Road

No.	Name	Road Information
1	Road Length	13 mile - 5 furlong
2	Type of Road (Origin)	Bituminous
3	Road Width (Origin)	24 feet width , Bituminous
4	Current Road Condition	0/0-10/1 = 10/1 mile (48 feet width, Bituminous + Concrete Road) 10/1-13/5 = 3/4 mile (44 feet width, Asphalt Concrete Road)
5	Type of Ongoing Projects	- Regular Maintenance Works - Regulation with Chipping, Concrete Paving Work
6	Starting Operation Date	1.4.2010

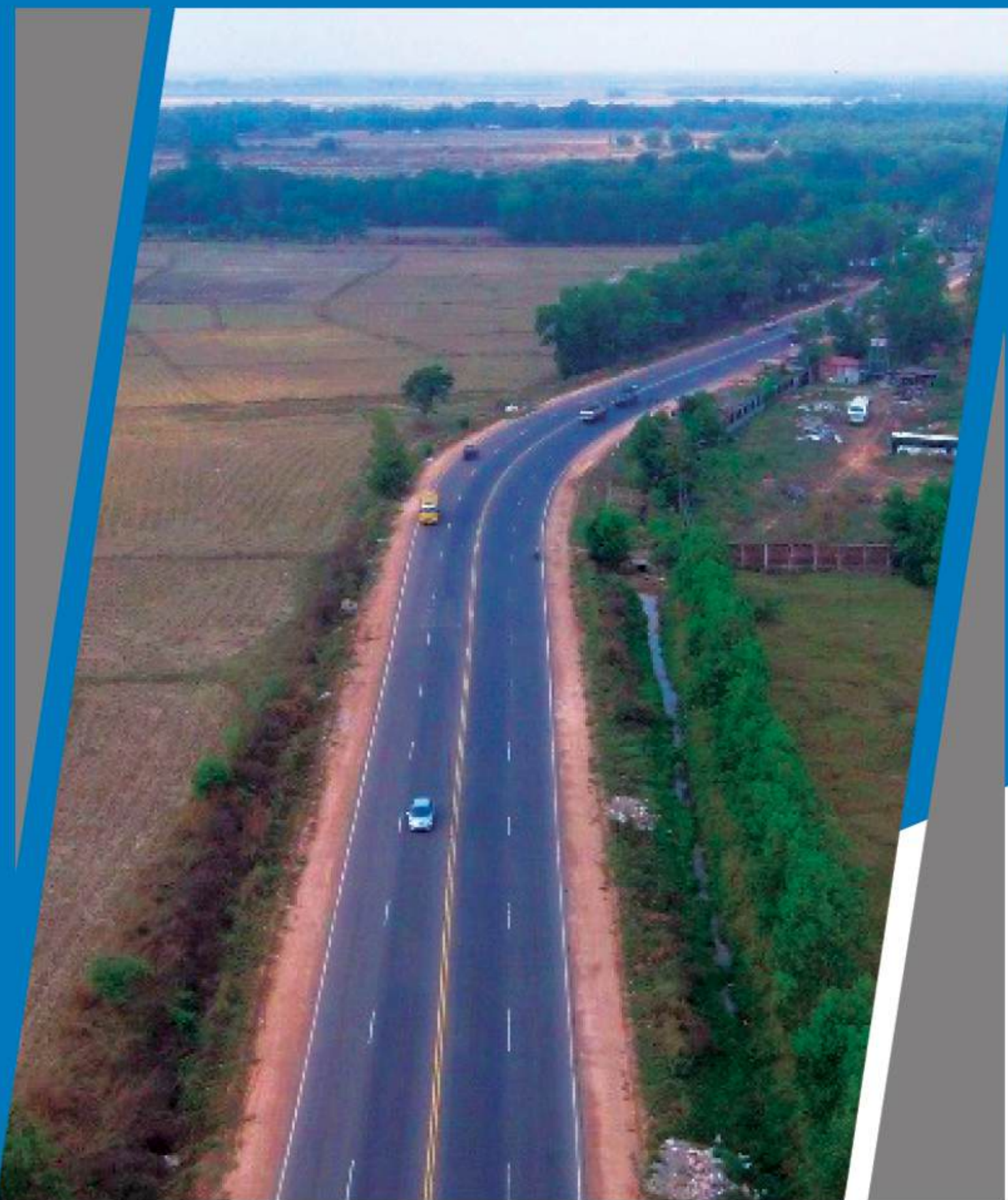
## THANLYIN - KYAUKTAN ROAD



### Thanlyin - Kyauktan Road

No.	Name	Road Information
1	Road Length	8 mile - 2 furlong
2	Type of Road (Origin)	Bituminous
3	Road Width (Origin)	22 feet width , Bituminous
4	Current Road Condition	0/0-6/4 = 6/4 mile (26 feet width, Bituminous + Concrete Road) 6/4-8/2 = 1/6 mile (30 feet width, Asphalt Concrete Road)
5	Starting Operation Date	1.4.2010

## YANGON-PYAY-MAGWAY ROAD



### Yangon-Pyay-Magway Road

No.	Name	Road Information
1	Road Length	307 mile - 3 furlong
2	Type of Road (Origin)	22 / 3 - 185 / 0 = Asphalt Concrete (A/C) , 185 / 0 - 329 / 6 = Bituminous
3	Road Width (Origin)	22 / 3 - 89 / 0 = 22 feet , 89 / 0 - 185 / 0 = 18 feet , 185 / 0 - 329 / 6 = 12 feet
4	Current Road Condition	22 / 3 - 52 / 7 = 30/5 mile ( 48 feet , A/C) 52 / 7 - 81 / 6 = 28/7 mile (48 feet , A/C + Concrete) 81 / 6 - 175 / 0 = 24 feet (A/C) 175 / 0 - 193 / 5 = 24 feet (Bituminous) 193 / 5 - 231 / 4 = 37/7 mile ( 44' - 3/1 mile, 24' - 17/6 mile, 18' - 17/0 mile) (Bituminous) 231 / 4 - 255 / 3 = 23/7 mile ( 24' - 10/0 mile, 18' - 13/7 mile) (Bituminous) 255 / 3 - 278 / 3 = 23/0 mile ( 18 feet, Bituminous) 278 / 3 - 279 / 4 = 1/1 mile ( 48 feet, Bituminous) 279 / 4 - 313 / 4 = 34/0 mile ( 18 feet, Bituminous) 313 / 4 - 328 / 1 = 14/50 mile ( 24 feet, Bituminous) 328 / 1 - 329 / 6 = 1/5 mile ( 18 feet , A/C)
5	Type of Ongoing Projects	<ul style="list-style-type: none"> <li>- Regular Maintenance Works</li> <li>Upgrading Work</li> <li>- Widening with Concrete and Penetration Macadam Work, Regulation, Overlay and Joint Seal</li> <li>Work with Chipping/ AC, Road Furniture Work, Earth Work</li> <li>Bridge Extension Work</li> </ul>
6	Starting Operation Date	1.4.2011

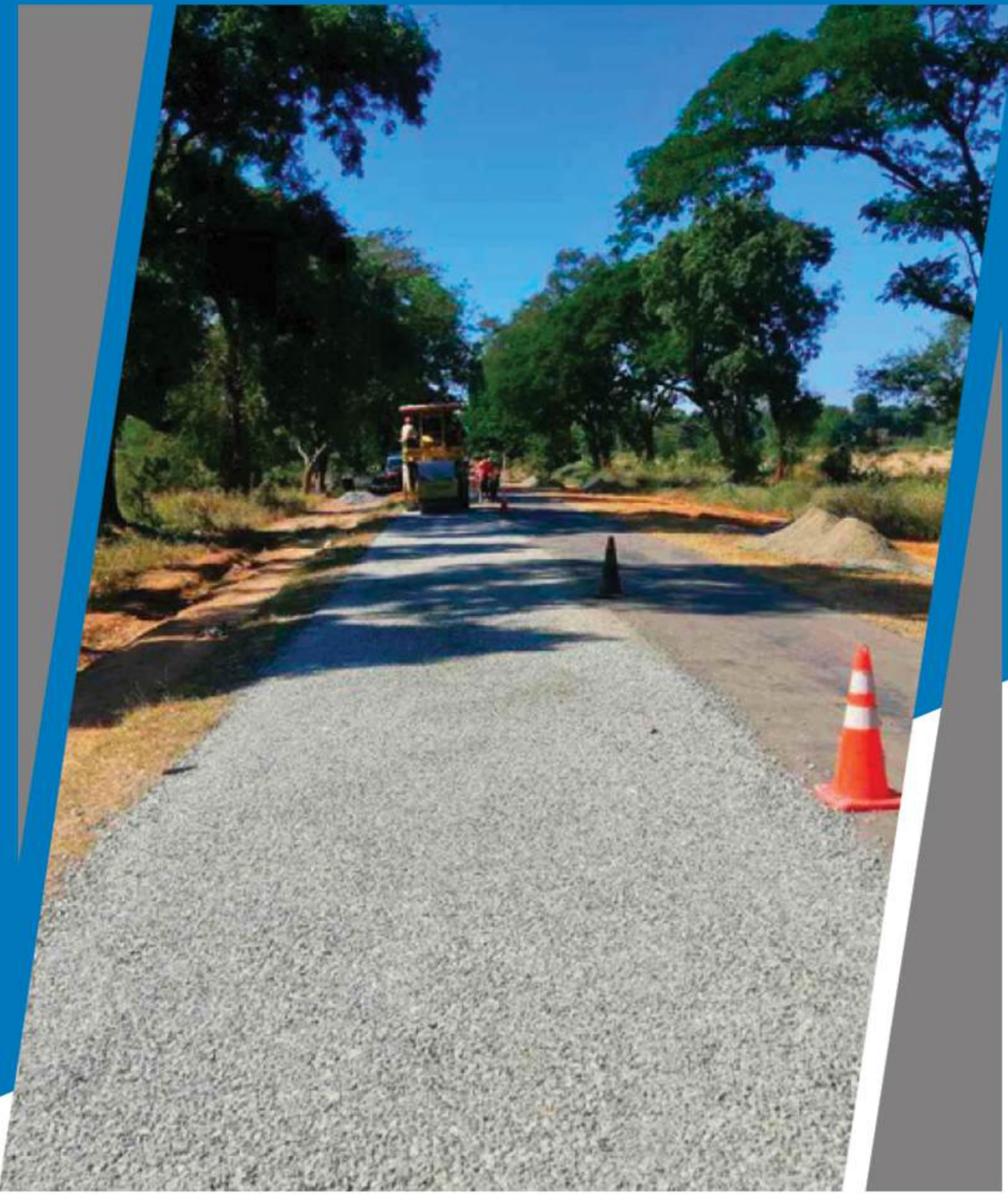
## PYAY DOWNTOWN ROAD



### Pyay Downtown Road

No.	Name	Road Information
1	Road Length	6 mile - 0 furlong
2	Type of Road (Origin)	18 feet width, Bituminous
3	Road Width (Origin)	18 feet width, Bituminous
4	Current Road Condition	0/0 - 2/7 = 2/7 mile (24 feet , A/C) 2/7 - 5/5 = 2/6 mile (48 feet , A/C) 5/5 - 6/0 = 0/3 mile (24 feet , A/C)
5	Type of Ongoing Projects	- Regular Maintenance Works
6	Starting Operation Date	1.4.2011

## KOEPIN – SANMAGYI – THYARKAUK ROAD SINPOUTWEL – TAWNYANUNGPINTHAR ROAD



### Keopin – Sanmagyi – Thiyarkauk Road

No.	Name	Road Information
1	Road Length	21 mile - 3 furlong
2	Type of Road (Origin)	12 feet width bituminous - 2 mile ,18 feet width bituminous - 5 mile, boulder road - 14 mile - 3 furlong
3	Road Width (Origin)	12 feet width , Bituminous
4	Current Road Condition	0/0-19/1 = 19/1 mile (18 feet, Bituminous) 19/1-21/3 = 2/2 mile (24 feet, Bituminous)
5	Type of Ongoing Projects	- Regular Maintenance Works
6	Starting Operation Date	1.4.2011

## OUR OPERATIONS

Max Highway Co., Ltd. is making roads safe and secure in road construction, road maintenance, and road upgrades in accordance with ISO 9001:2015. Professionals following quality management standards, and innovative engineering maintenance techniques with modern machines for road users and people to provide safe and quality roads. All these processes are being carried out with special attention.



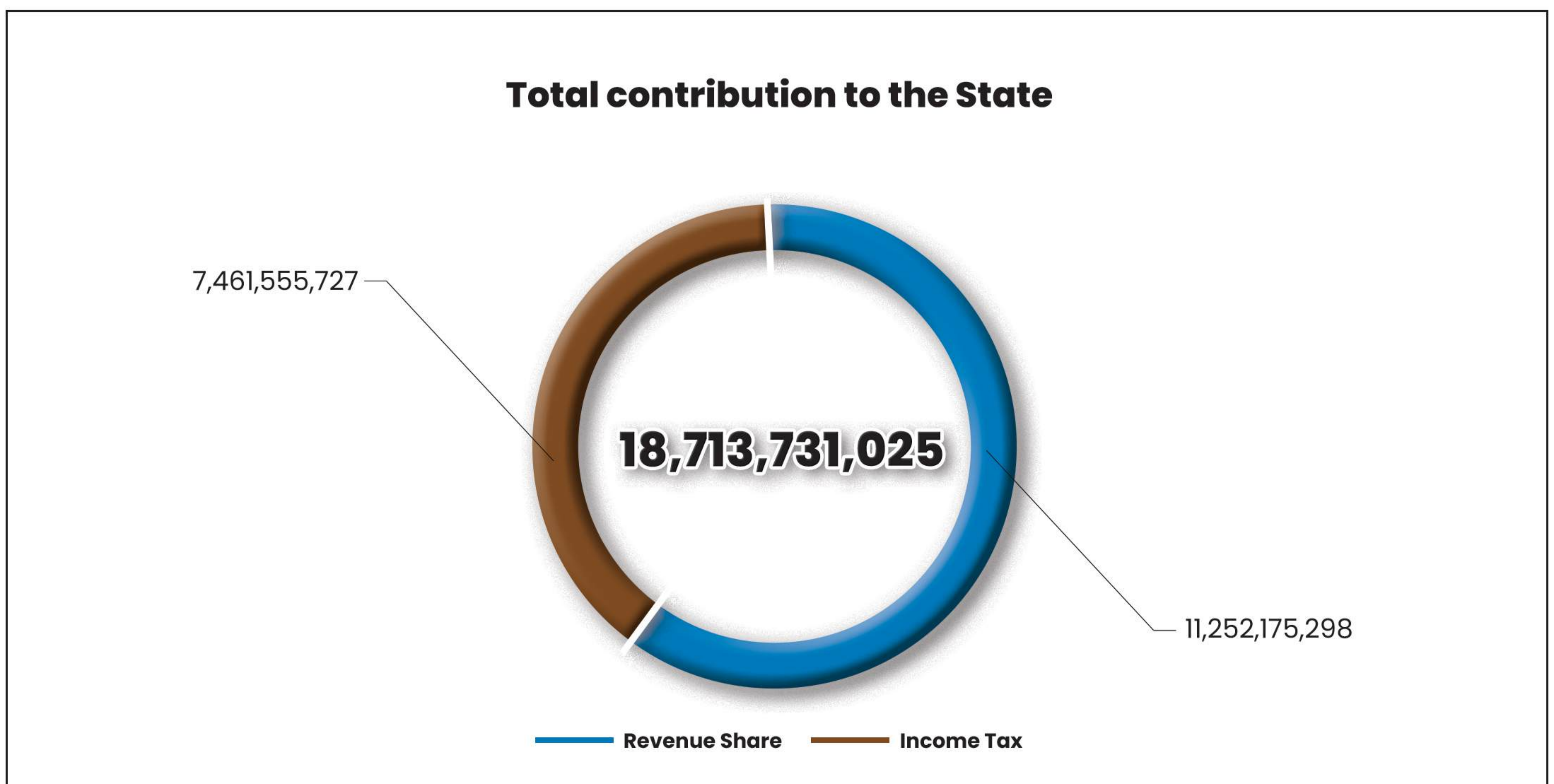
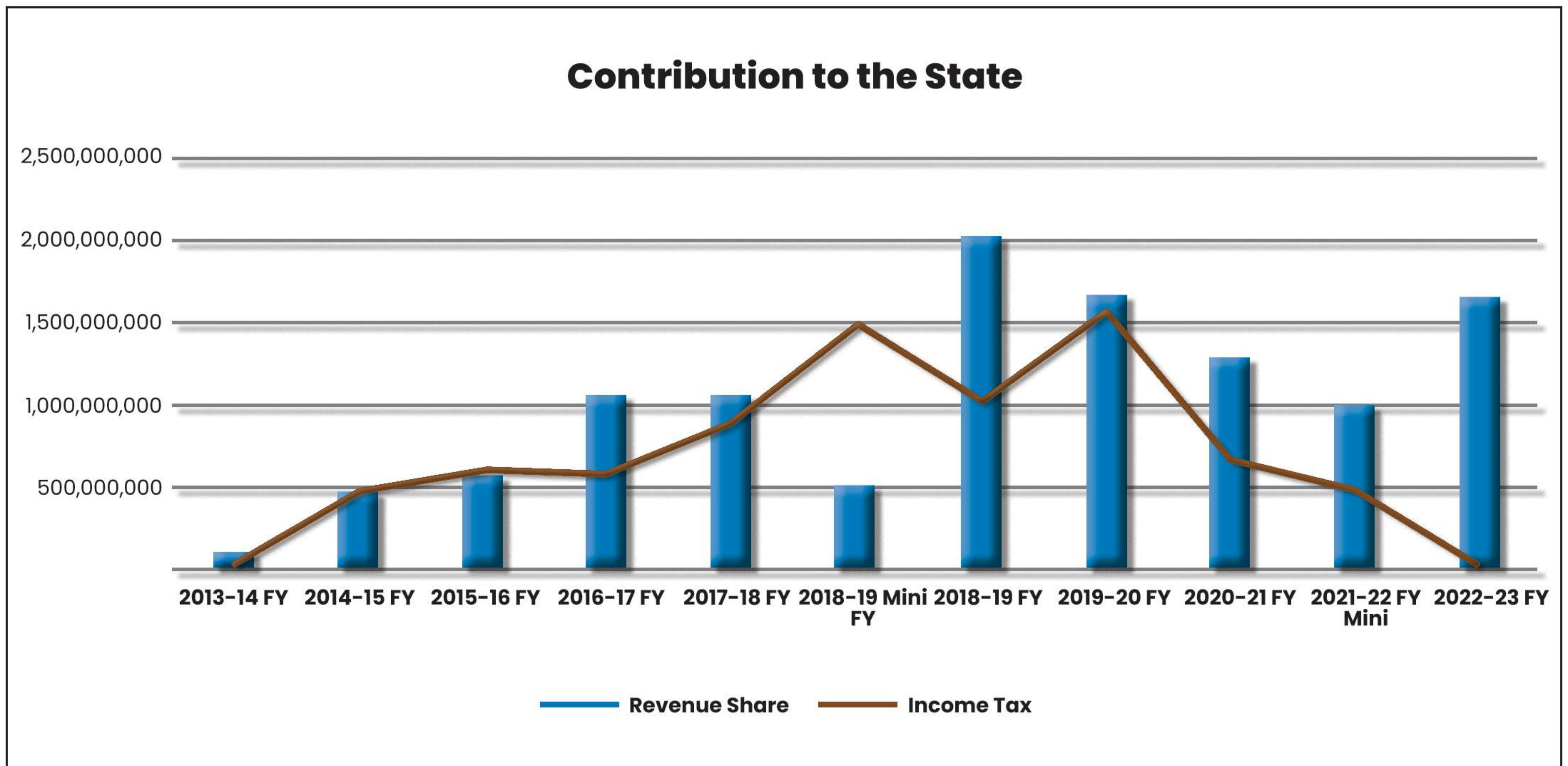
## OUR EXPERIENCE

Max Highway Co. Ltd, was primarily responsible for upgrading major roads like the Yangon-Pyay-Magway Road and Yangon-Bago Road, as well as the Thanlyin-Thilawa Access Road and Han Myint Mo-Myo Gyi-Ywar Ngan-Aung Ban Road. Han Myint Mo-Myo Gyi Ywar Ngan-Aung Ban road is located in the self-governing region of Shan State. The project was complete as a collaboration between JICA and Max Myanmar Construction Co. Ltd., a Business Unit of the Max Myanmar Group of Companies.



## FINANCE HIGHLIGHTS

Max Highway Co., Ltd. has achieved steady revenue growth over the years. Alongside this growth, the company has made increasing contributions to the State with a total payment of **MMK 18.71** billion from FY 2013 to 2023.



# OUR ASSETS

An in-depth exploration of our skilled technicians, workforce, and formidable financial backbone.



## Concrete Batching Plant

Sr.	Plant Brand Name	Capacity	Unit
1.	BATCHTEC	90m <sup>3</sup> /hr	1
2.	BATCHTEC	90m <sup>3</sup> /hr	1
3.	ZCD	60m <sup>3</sup> /hr	1
4.	TRIANGLE LINK	30m <sup>3</sup> /hr	1
5.	ZCD	60m <sup>3</sup> /hr	1
Total			5

## Asphalt Concrete Plant

Sr.	Plant Brand Name	Capacity	Unit
1.	NIIGATA (Japan) NAP-BD 1000	60 Ton/hr	1
2.	NIIGATA (Japan) NAP-BD 1000AB	60 Ton/hr	1
3.	AMMANN (India) DM-45(APOLLO)	45 Ton/hr	1
4.	PRIMACH-125T (China) PM125-T190	120 Ton/hr	1
5.	PRIMACH-125T (China) PM125-T190	120 Ton/hr	1
Total			5

# MAKING A DIFFERENCE

## Max Highway: A Journey of Giving

Max Highway's journey of giving back stands as a testament to our unwavering commitment to making a positive impact on the lives of the people of Myanmar and contributing to the growth and prosperity of their livelihoods.

Since its inception in 1993, the Max Myanmar Group of Companies has upheld a profound commitment to the well-being of Myanmar's citizens, particularly in rural and urban areas. Collectively, Max Group has proudly contributed a total of 80 million USD towards underserved communities and regions in need.

Our efforts positively contributed to all levels of education, encompassing elementary schools to universities, promoting youth development and sports programmes (e.g. Youth Football), and supporting tertiary education nationwide. In the healthcare sector, we have donated and supported the construction of healthcare facilities, aiming to enhance healthcare accessibility in Myanmar.

Furthermore, we've addressed and contributed towards basic necessities, providing essential support in the form of food, clothing, to contribute towards the betterment of livelihoods. In times of natural disasters, we're dedicated to contributing towards flood relief, disaster recovery and rescue operations.

At the heart of our Corporate Social Responsibility (CSR) initiatives, lies our belief in creating opportunities for growth and development. We encourage our employees to actively participate in CSR activities, fostering a sense of unity and commitment to giving back to the communities we serve. Beyond philanthropy, our CSR initiatives strengthen our bonds with local communities, cultivating trust and forging lasting relationships. Max Highway, in collaboration with AYA Foundation, actively participated in humanitarian relief efforts in response to the powerful 7.7 magnitude earthquake that struck Mandalay on March 28, 2025

Here are some of the many initiatives we've supported:



# CSR DONATION



# CONTACT US

## Address

A2 (6,7,8,9,10), Thiri Yadanar  
Shopping Complex, North Okkakarpa,  
Yangon, Myanmar.

## Phones

(+951)967089090 - 095

## Mail

[info@maxhighway.com](mailto:info@maxhighway.com)

## Website

[www.maxhighway.com](http://www.maxhighway.com)